

CW Series CruiserWeight

Product Specifications



DESIGN HIGHLIGHTS

- Patented design releases door panels upon impact from interior while providing security from exterior
- Heavy-duty single knockout track is pre-punched, full height 12 gauge galvanized steel
- Unique panel construction: impact resistant, 1 3/4" thick, insulated.
- Heavy-duty spring-loaded plungers on knockout panels eliminate high-maintenance roller wheels
- Panel-mounted dual side loop seal, Lintel brush seal, foam filled loop bottom weather seal. Optional bottom brush seal available in addition to standard seal
- Torsion spring counterbalance system rated for 15,000-cycle minimum. Higher cycle torsion springs or counterweight system available
- One TKO lock for security or knockout provisions
- Black grip door lift handle, two standard per door

DOOR SIZE

Opening Width _____ in / cm Opening Height _____ in / cm

PROJECT INFORMATION

JOB NAME _____

ADDRESS _____

GENERAL CONTRACTOR _____

DISTRIBUTOR _____

MODEL _____

QUANTITY _____

VOLTAGE/PHASE _____

CERTIFIED FOR CONSTRUCTION

BY _____

COMPANY _____

ADDRESS _____

DATE _____

OPTION

Wind Load Package

TRACK

Steel Track Impact-A-Track 3' 6' Full Height
 Double Knockout Header
 C-Channel Spring Pad Mount

PANEL

Slide Lock Left Right Dual
 Non-Insulated
 Knockout Lock Pilfer Proof Lock
 Anti Drift Up Lock Anti Drift Down Lock
 Single Pane Window Dual Pane Window
 Full Vision Panel Clear Translucent
 Powerhouse Panel Bottom 2nd 3rd Full Door
 Blade Lintel Seal
 3" Bottom Brush Seal
 Thermal Package

COUNTERBALANCE

Cycle Springs: 25k 50k 75k 100k
 Counterweight System Solid Shaft Upgrade

OPERATOR

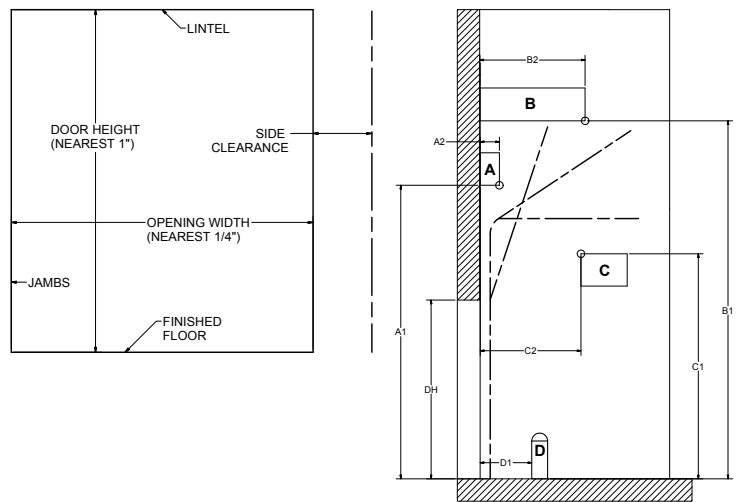
Manual Chain Hoist Auxiliary Trolley Chain Hoist
 Model J Operator VAC _____ Phase _____
 Model H Operator VAC _____ Phase _____
 Model T Operator VAC _____ Phase _____
 Primary Safety Features
 Monitored Photo Eyes Monitored Safety Edge
 Secondary Safety Features
 Electric 2-wire Safety Edge Electric 4-wire fail safe Safety Edge
 Pneumatic Safety Edge
 Pull Cord Quantity _____
 Car Wash Operator Upgrade
 NEMA 4 Controls Upgrade

DOOR OPENING DIMENSIONS & CLEARANCES

Opening Width (To Nearest 1/4") _____
 Opening Height (To Nearest 1") _____
 Side Clearance Right _____ Side Clearance Left _____
 Jamb Substrate/Mounting Surface Material: Specify Block, Masonry, Wood, Steel, Insulated Panel, Other _____
 Upper _____ Lower _____

OVERHEAD OBSTRUCTIONS & CLEARANCES

Zone A Obs. Type: Conduit, Beam, Other _____
 Dimension A1 _____ Dimension A2 _____
 Zone B Obs. Type: Ceiling, Truss, Other _____
 Dimension B1 _____ Dimension B2 _____
 Zone C Obs. Type: Racking, Sprinkler, Other _____
 Dimension C1 _____ Dimension C2 _____
 Zone D Obs. Type: Bollard, Other _____
 Dimension D1 _____



1. **General:** TKO Door's patented design releases door panels upon impact from interior while providing security from exterior.
2. **Track:** Heavy-duty single knockout track is pre-punched, full height, 12 gauge galvanized steel.
3. **Panel:** Unique panel construction. Impact resistant, 1.75" thick, insulated.
4. **Guide Pins:** Heavy-duty spring-loaded plungers on knockout panels, eliminate high maintenance roller wheels.
5. **Seals:** Panel-mounted dual side loop seal, Lintel brush seal, foam filled loop bottom weather seal. Optional bottom brush seal available in addition to standard loop.
6. **Counterbalance System:** Torsion spring counterbalance system rated for 15,000-cycle minimum. Higher cycle torsion springs or counterweight system available.
7. **Lock:** One TKO lock for security or knockout provisions.
8. **Handles:** Black grip door lift handle, two per door standard.
9. **Warranty:** TKO Dock Doors, a business unit of 4Front Engineered Solutions, Inc., warrants that every door, its hardware and fittings will be free of defects in workmanship and material. Should any defect in workmanship or material appear within ONE (1) year of shipment, TKO shall, upon notification, correct such non-conformity at its option, by repairing or replacing any defective part or parts. **This limited warranty does not include** normal wear, modifications, and damage beyond the manufacturer's control, replacement labor or implied cycle life of counter balance systems (cables, spring assembly, drums, shaft cones, shaft bearings or center bearing bracket).
10. **Panel Limited Warranty:** Door will remain operational after resetting from impact under normal use, service and maintenance for ONE (1) year (excluding any window portion thereof) from date of shipment. Does not cover punctures, cracks or slices in panel(s). Optional Super bottom panel: two-year performance limited warranty from date of shipment.
11. **Impact-A-Track Limited Warranty:** TKO Dock Doors warrants its Impact-A-Track™ for FIVE (5) years from date of shipment. This is for the Impact-A-Track portion only. Cuts, gouges and abrasions are not considered warrantable conditions.



TKO Dock Doors
 N56 W24701 Corporate Circle Sussex,
 Wisconsin 53089, USA
 877.408.6788
 www.tkodoors.com

TKO Doors reserves the right to change specifications and designs without notice and without incurring obligations. TKO Doors products may be the subject of one or more U.S. and/or foreign, issued and/or pending, design and/or utility patents. TKO Doors as word and logo are registered trademarks belonging to Entrematic Group AB or other companies controlled by the same organization. All rights reserved.